



## BLACK ROCK HARBOR

### Wednesday Night Series

### Sailing Instructions

**June 10 – Sep 9, 2020**

Organized by Black Rock Y.C. and Fayerweather Y.C. Black Rock, Connecticut

---

#### **1 Rules**

**1.1** The races will be governed by the *rules* as defined in *The Racing Rules of Sailing*(RRS) 2017-2020, and the current PHRF Regulations as adopted and amended by the YRA of LIS.

**1.2** Crew Weight limits and the crew weight credits indicated on a boat's PHRF certificate, will not apply.

**1.3** It is the responsibility of the each boats owner or owner's representative to maintain and have aboard proper safety equipment and a current 2020 YRA of LIS, PHRF certification.

#### **2 Check-in and Retirement**

**2.1** A boat intending to start a race shall approach the race committee signal boat with their main up and on starboard tack and hail her division and sail number before the warning signal. Boats arriving late to the starting area or boats whose class is not in the starting sequence shall stay clear of the starting area

**2.2** A boat retiring from a race must inform the race committee as soon as possible. The race committee monitors VHF channel 68.

#### **3 Notices to Competitors**

**3.1** Notices to competitors and scratch sheets will be posted on [Yachtscoring.com](https://www.yachtscoring.com) for the series.

3.2 Any change to the sailing instructions will be communicated before 1730 on the day it will take effect.

#### 4 Signals Made Ashore

4.1 Signals made from a race committee boat, either on a mooring in Black Rock Harbor, or docked at FYC, will be considered as signals made ashore

4.2 When flag AP is displayed ashore, “1 minute” is replace with “not less than 45 minutes” in the race signal AP.

#### 5 Schedules

5.1 The Series will consist of one race as scheduled per evening.

May	<del>13</del>	<del>20</del>	<del>27</del>		
June	3	10	17	24	
July	1	8	15	22	29
Aug	5	12	19	26	
Sept	2	9			

5.2 The first warning signal is scheduled for 1850 hours from June 10, 2020 through August 5, 2020. On August 12, 2020 and thereafter, the first warning signal is scheduled for 1830 hours.

#### 6 Divisions

6.1 Boats shall sail within one of the divisions described below. Boats shall not change divisions during a series without the consent of the organizing authority.

- Div 1: Spinnaker boats
- Div 2: Non-spinnaker boats

6.2 Division flags will be the numeral pennant corresponding to the division number.

#### 7 Courses and Signals

7.1 Courses, The marks to be used are shown on the attached page titled “Black Rock Harbor Race Course Marks” Further footnoted with v11 on the bottom of the page. The course to be sailed will be signaled by posting the letters that correspond to the marks that are to be rounded. They will be posted on the course board in the order in which they are to be rounded, and shall include the finish mark. All rounding marks are to be left to the same side as the starting mark. Letters that correspond to rounding marks that are to be left to the opposite side shall be circled on the course board. A number following the list of marks to be rounded may be used to indicate the number of times around the course.

7.2 Divisions 1 will sail windward leeward courses and Divisions 2 will sail random leg courses.

7.4 Aids to navigation not used as turning marks may be disregarded with the following exceptions.

No yacht shall pass:

- between 100ft west of LC and Penfield Light
- between Penfield Light and Lantern point
- between Flasher 2A and Fayerweather Light

## 8 The Start

8.1 The Starting Line will be between a flag on the race committee boat and the starting mark.

8.2 Races will be started using rule 26, with no changes:

Signal	Flag	Sound	Min
Warning	Class flag displayed	1 sound	5
Preparatory	P, I, Z, Z with I, or black	1 sound	4
One-Minute	Preparatory flag removed	1 long sound	1
Starting	Class flag removed	1 sound	0

8.3 A series of short sound signals or hails may be made before the starting sequence begins in order to attract attention. Neither failure to make this signal nor failure of a boat to hear it will be grounds for redress.

8.4 Starts will normally be rolling. At the start signal the Division Pennant will be removed and replaced by the next division's Pennant, which will be their warning signal.

8.5 Divisions will start as follows:

- Division 1 will start first, followed by Division 2

8.6 Individual Recalls will be signaled by displaying the code flag "X" and one sound. An "over early" boat will be hailed to restart by her name or sail number and an attempt may be made to notify her over VHF Channel 68. Neither failure to hail nor failure of a boat to hear their hail will be grounds for redress.

8.7 General Recalls will be signaled with code flag "First Substitute" (FS) and two sounds. A new warning signal for the recalled division will be made one minute after lowering "FS" and one sound. Succeeding divisions shall follow the order of the new start.

## 9 Change of Course after the Start

**9.1** A change of course will be signaled by a race committee boat making sound signals, displaying flag "C", and displaying the remaining marks to be passed, including the finishing mark. This changes rule 33.

## **10 The Finish**

**10.1** The Finish Line is between a flag on a race committee boat and the finish mark and shall be crossed in the direction of the course from the last mark.

**10.2** The Time limit for all boats will be 25 minutes after the first boat finishing within their fleet. All boats not finishing by the time limit will be scored TLE.

## **11 Starting Area**

**11.1** The starting area is around Red 2A or within 0.5NM East/South East of Red 2A.

## **12 Penalty System**

**12.1** A boat breaking a rule described in RRS Part 2 ("When Boats Meet") may take a penalty by promptly making one turn including one tack and one gybe. This modifies the "two turns rule".

## **13 Scoring**

**13.1** The Low-Point Scoring System in RRS Appendix A will apply. Except that Rule A2 is changed to exclude the worst scores, including "did not start" (DNS) for each boat for all races in excess of 60% of the total number of races in the series. At least one race must be completed to constitute the Series.

**13.2** A modified YRA of LIS, PHRF "time on time" scoring procedure will be used. [TCF=650/ (550+PHRF)]

**13.3** For the purpose of calculating 60% of the total number of races scored, it will aggregate races scored multiplied by 0.6 and rounded upward. (i.e. 18 races scored will result in 11 best scores towards final position.  $18 \times 0.6 = 10.8$ , rounded to 11)

**13.4** A boat serving as Race Committee will be scored as having competed in that race and will be assigned a score equal to her average for **all** races **sailed** during the season (i.e. if a boat sailed in 15 races, the average score for all 15 races will be used as the position for the week they performed R/C). If a boat does not perform her R/C duties, or find a replacement to perform R/C, on the date posted on the regatta website, that boat shall be disqualified for that series. The organizing authority shall be notified of any arrangements for replacements.

**13.5** If a boat assigned to Race Committee chooses to participate in that evening race, that boat may sail the course but will not be scored as a participant. That boat will be scored as to 13.4.

## **14 Protests**

**14.1** In addition to the requirements of rule 61, the protestor must also inform the race committee as soon as possible after finishing or retiring of the intent to protest. The completed US Sailing protest form must be delivered to the Race Committee within 1 hour after the race committee signal boat docks. The protest committee shall extend the time limit if there is good reason to do so.

**14.2** The Organizing authority shall select a three member Protest Committee as soon as possible. One member shall be appointed Protest Committee Chairman. The three member Protest Committee must not be comprised of any interested party. Club members who are US Sailing Certified Race Officers and/or US Sailing Certified Judges may also be selected to serve on the three member Protest Committee and shall be given preference in selection. The Protest Committee Chairman will schedule the date to hear the protest.

## **15 Liability**

**15.1** Competitors participate in the racing at their own risk. See RRS rule 4, Decision to Race. The organizing authority will not accept any liability for material damage or personal injury or death sustained in conjunction with or prior to, during, or after the racing.

## **16 Radio Communication**

**16.1** The race committee will monitor and utilize VHF Channel 68 once "on station."

**16.2** The race committee may designate an unofficial observer to transmit courtesy broadcasts such as course changes, postponements or abandon races, for the safety of boats out of hailing distance or sight of the R/C boat. (It is the responsibility of each competitor to observe the race committee's visual signals, failure to hear courtesy broadcasts and errors or omissions on the part of the designated observer will not be considered as grounds for granting redress).

## **17 Trophies**

**17.1** Top finishers of the Series in each Division will be awarded for Series and combined season overall. Top three finishes shall be awarded for divisions that have more than five registered competitors that have sailed at least one race. Top two finishes shall be awarded for divisions with four or more competitors that have sailed at least one race. First place shall be awarded for divisions with three competitors that have sailed at least one race.

**17.2** To be eligible for trophies, a boat must submit a 2020 current PHRF certificate issued by the YRA of LIS, no later than the earlier of the 1st race of May 9<sup>th</sup>. PHRF certificates should be submitted to [Yachting@blackrockyc.org](mailto:Yachting@blackrockyc.org). All competitors shall comply fully with the requirements of their PHRF certificates and the sailing instructions for this series.

**18 Contacts**

BRYC: Jenny Anderson (203) 803-5618 [jennyandsea@gmail.com](mailto:jennyandsea@gmail.com)

FYC: Michael Mears (203) 522-9371 [Sailing@FYCCT.org](mailto:Sailing@FYCCT.org)

BRYC: Bill Lynch (203) 258-3078



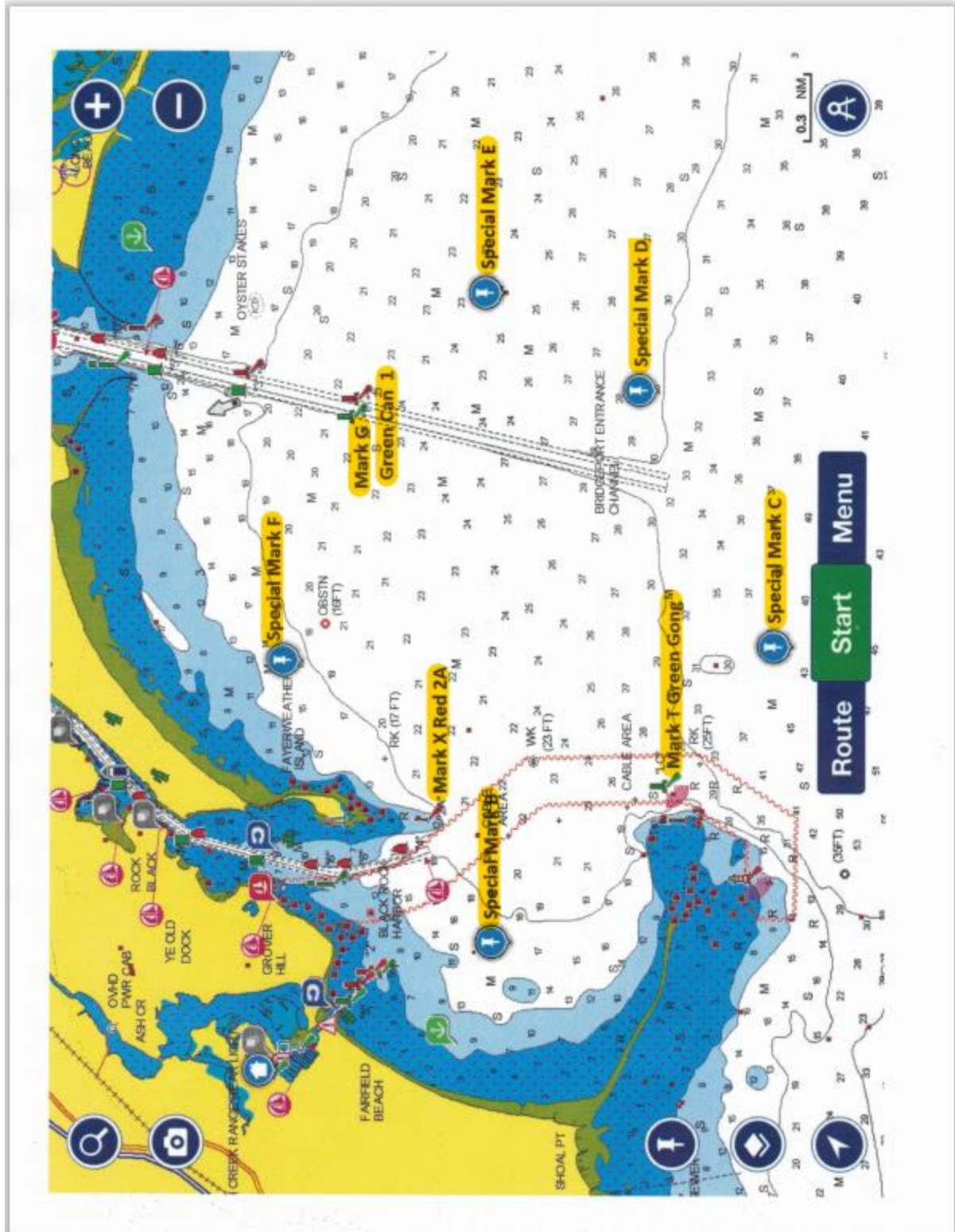
# BLACK ROCK HARBOR

## Race Course Marks

Organized by Black Rock Y.C. and Fayerweather Y.C. Black Rock, Connecticut

- A – Special Starting Mark – either Yellow or Orange tetrahedron
- B – Special Mark “B” (GPS 41° 07.844/ 73° 13.824)
- C – Special Mark “C” (GPS 41° 06.837/ 73° 12.178)
- D – Special Mark “D” (GPS 41° 07.348/ 73° 10.904)
- E – Special Mark “E” (GPS 41° 07.926/ 73° 10.426)
- F – Special Mark “F” (GPS 41° 08.679/ 73° 12.248)
- G – Green Can “1” Bridgeport Entrance Channel
- J- Special mark windward (yellow tetrahedron)
- K- Special mark leeward (yellow tetrahedron)
- R – Red Bell “18” 2 nautical miles South of Point no Point – Stratford
- S – Red Bell “22” 3/4 nautical mile South of S. Pine Creek Point – Southport
- T – Green Gong “LC” off Penfield Reef
- W – Green Can “1” at Stony Brook
- X – Red “2A” Black Rock Harbor Entrance Channel
- Y – Green Gong “11A” 1.5 nm NNW Port Jefferson Entrance
- Z – RW “PJ” 1.5 nm N Port Jefferson Entrance

NOTE: MARKS B,C,D,E & F are estimated GPS coordinates, final coordinates will be updated when the Marks are placed in the water.





**Mark Distance Table**  
 (Estimate Nautical Miles between Marks)

	B	C	D	E	F	G	T	X
B		1.5	2	2.4	1.2	2.2	0.5	0.5
C	1.5		0.8	1.7	2	2.3	0.9	1.6
D	2	0.8		0.9	1.9	1.8	1.5	2
E	2.4	1.7	0.9		1.8	1.1	2.1	2.1
F	1.2	2	1.9	1.8		1.2	1.3	0.7
G	2.2	2.3	1.8	1.1	1.2		2.1	1.7
T	0.5	0.9	1.5	2.1	1.3	2.1		0.9
X	0.5	1.6	2	2.1	0.7	1.7	0.9	

**Mark Bearings**  
 (Estimate using RC position at 41°08.315' / 73°12.417')

	*Bearing to First Mark
B	240
C	175
D	140
E	115
F	0
G	55
T	210
X	265



## Black Rock Harbor Wednesday Night 2020 Race Course Sheet



PORT	indicates leave mark to PORT
STARBD	indicates leave mark to STARBOARD
A	Start
F	Finish

**Course # Start Turning Marks Finish \*Bearing to First Mark**

### Spinnaker

1	A	T	A	T		F	210
2	A	T	F	T	F	F	210
3	A	C	A	C		F	175
4	A	C	F	C	F	F	175
5	A	D	A	D		F	140
6	A	D	F	D	F	F	140
7	A	E	A	E		F	115
8	A	E	B	E	B	F	115
9	A	F	C	F	C	F	0
10	A	F	D	F	D	F	0
11	A	E	F	E	F	F	115
12	A	B	A	B		F	240
13	A	B	D	B	D	F	240
14	A	B	E	B	E	F	240
15	A	G	A	G		F	55
16	A	G	C	G	C	F	75



## Black Rock Harbor Wednesday Night 2020 Race Course Sheet



PORT	indicates leave mark to PORT
STARBD	indicates leave mark to STARBOARD
A	Start
F	Finish

Course #	Start	Turning Marks	Finish	*Bearing to First Mark
----------	-------	---------------	--------	------------------------

### Non - Spinnaker

Course #	Start	Turning Marks	Finish	*Bearing to First Mark
1	A	T D E	F	210
2	A	T D G	F	210
3	A	T D F	F	210
4	A	T C E	F	210
5	A	T C F	F	210
6	A	T F E	F	210
7	A	C D F	F	175
8	A	C E F	F	175
9	A	C E	F	175
10	A	C G	F	175
11	A	F E	F	0
12	A	F E C	F	0
13	A	T E F	F	210
14	A	G E	F	55
15	A	G B	F	55
16	A	G D	F	55
17	A	G D T	F	55
18	A	G E C	F	55
19	A	G F C	F	55
20	A	G T D	F	55
21	A	G B D	F	55
22	A	B D H	F	240
23	A	B F	F	240
24	A	B F E	F	240
25	A	B F D	F	240
26	A	D E B	F	140
27	A	D E F	F	140
28	A	D B E	F	140
29	A	D T F	F	140
30	A	T C D	F	210
31	A	E C	F	115